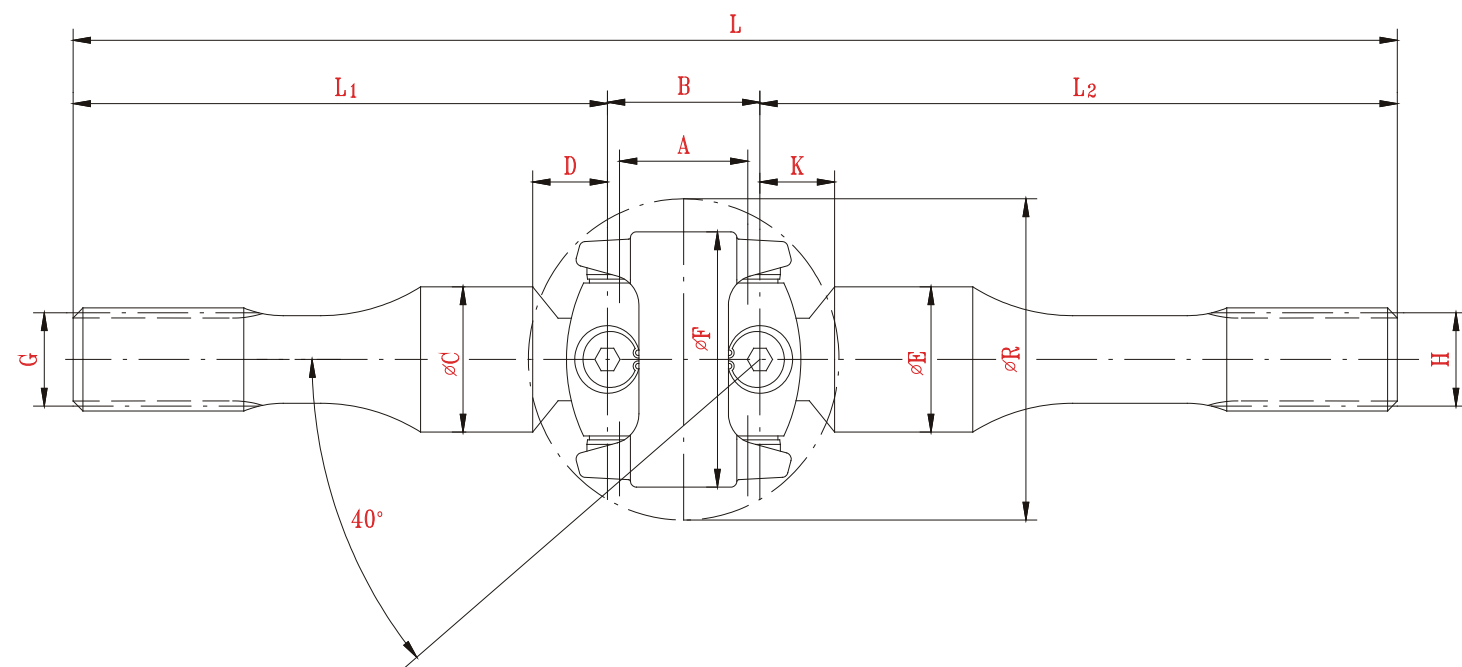
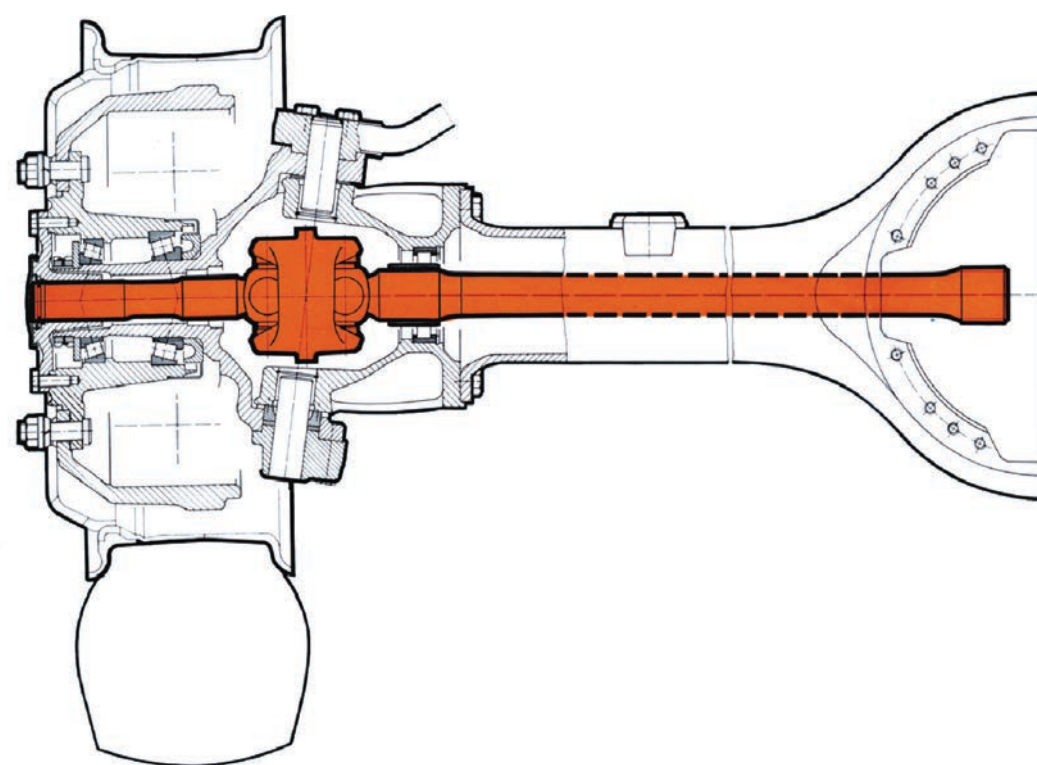


ZGLOBNE POLIUSOVINE
DOUBLE JOINT SHAFTS



Tip Type	Md Nm	A mm	B mm	ØC mm	D mm	ØE mm	ØF mm	K mm	ØR mm	G mm	H mm	L1 mm	L2 mm	L mm
P5-5	6500	62	80	45	34	50	138	37	193	40x44 DIN 5481	40x44 DIN 5481	251	731	1062
P5-5	6500	62	80	50	32	50	138	43	193	40x1,25x37 DIN 5481	40x1,25x37 DIN 5480	254	731	1065



OSTALI PROIZVODNI PROGRAM
OTHER PRODUCTION PROGRAM



Fabrika kotrljajućih ležajeva i kardana FKL a.d. Temerin
Industrijska zona bb
21235 TEMERIN
SRBIJA
Tel.: +381 21 6841 100, Fax: +381 21 842 650
E-mail: marketing@fkl-serbia.com

Factory of Rolling Bearings and Cardan Shafts FKL Temerin
Industrijska zona bb
21235 TEMERIN
SERBIA
Phone.: +381 21 6841 100, Fax: +381 21 842 650
E-mail: marketing@fkl-serbia.com

BRANCH OFFICES:
LLC "FKL-RUSSIA"
Novgorodskaya Str. 121
394088 VORONEZH
RUSSIAN FEDERATION
Phone/Fax: +74732 747150 / 748361
E-mail: mail@rusfkl.ru

TEMKO SKOPJE
Socijalistička zora 39
91060 SKOPJE
MACEDONIA
Phone/Fax: +389 23 66 068

www.fkl-serbia.com

Cardan shafts for heavy vehicles and for industrial application



Kardanska vratila
za privredna vozila i industriju

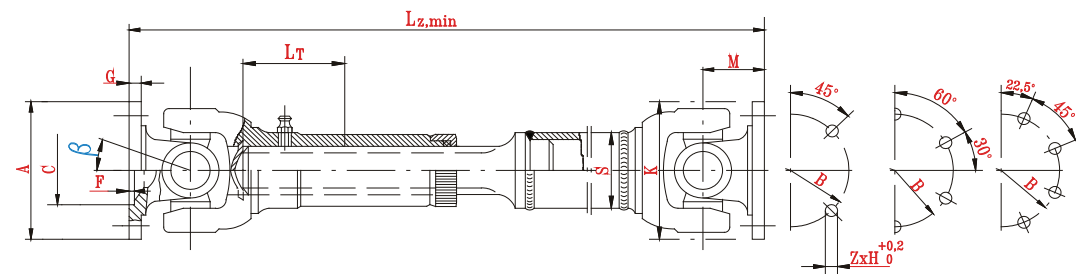


KARDANSKA VRATILA
CARDAN SHAFTS

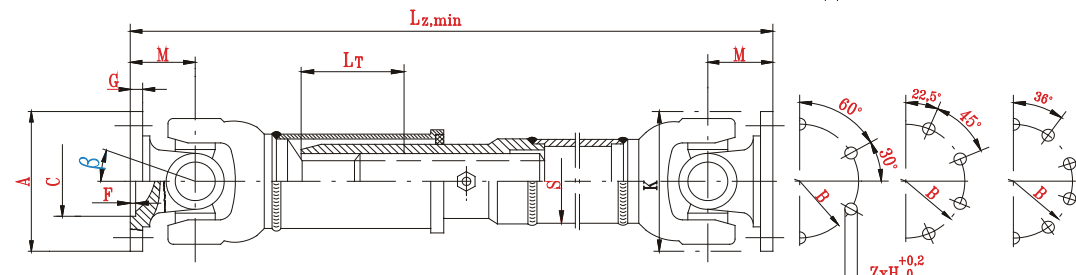
TABELA KARDANSKIH VRATILA
TABLE OF DRIVE SHAFT YOKES

MEĐUVRATILA
INTERMEDIATE SHAFTS

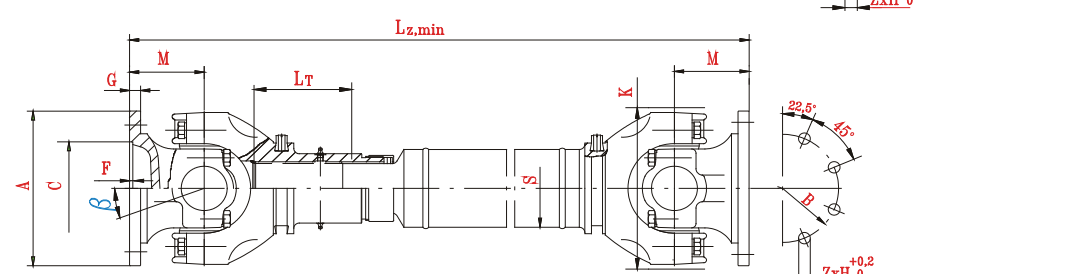
CEVNA IZVEDBA:
TUBULAR DESIGN: **A.01**



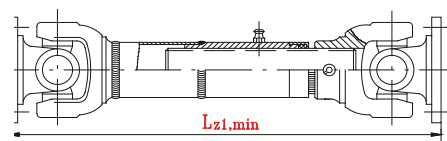
CEVNA IZVEDBA:
TUBULAR DESIGN: **B.01**



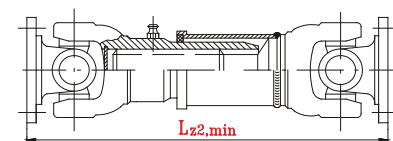
CEVNA IZVEDBA:
TUBULAR DESIGN: **C.01**



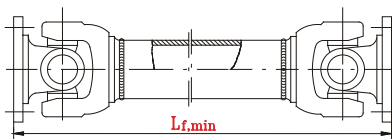
IZVEDBA SA
DUGAČKIM
TELESKOPIRANJEM:
DESIGN WITH
LARGE LENGTH
COMPENSATION: **.02**



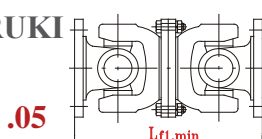
KRATKA
IZVEDBA:
SHORT
DESIGN: **.14**



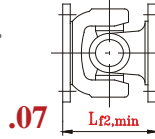
IZVEDBA BEZ
TELESKOPIRANJA:
DESIGN WITHOUT
LENGTH
COMPENSATION: **.03**



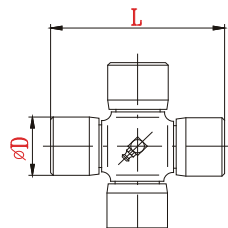
DVOSTRUKI
ZGLOB:
DOUBLE
JOINT: **.05**



JEDNOSTR.
ZGLOB:
SINGLE
JOINT: **.07**

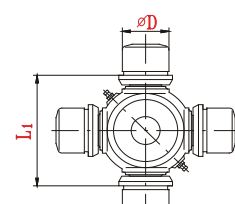


SKLOPOVI KRSTAKA
JOURNAL CROSS ASSEMBLIES



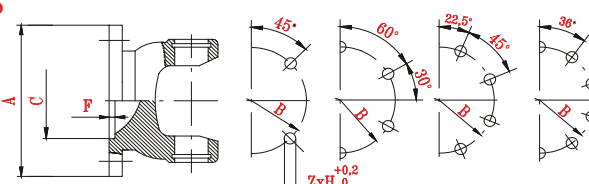
ZA IZVEDBE:
FOR DESIGN: **A, B**

ZA IZVEDBE:
FOR DESIGN: **A, B**

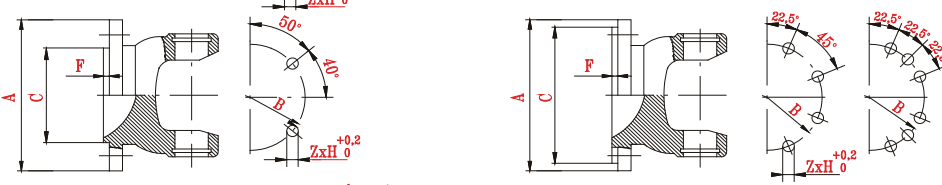


ALTERNATIVNE PRIRUBNICE KARDANA
OTHER POSSIBLE FLANGE FITTINGS

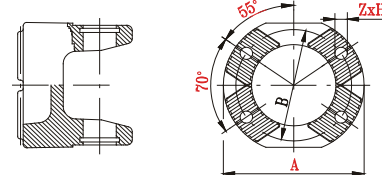
"DIN"



"SAE"



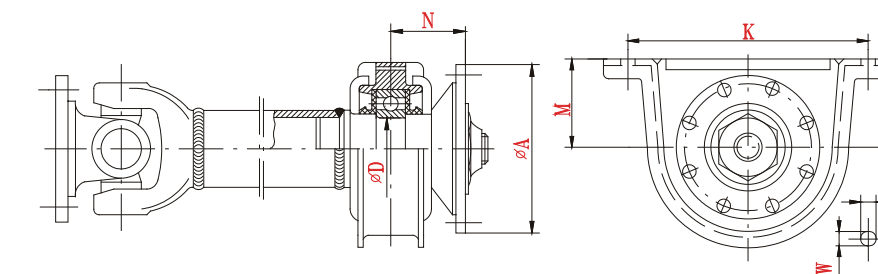
KV-PRIRUBNE VILE
PREMA-ISO 12667
XS-CROSS SERATION
FLANGE YOKES-ISO 12667



VELIČINA/SIZE		65	75	90	100	120	150	165	180	180W	225	250	285*
Md	Nm	225	400	1250	2000	3400	6200	10000	12000	15000	18000	22000	28000
IZVEDBA/DESIGN		A	A	A, B	A, B	A, B	B	A, B	B	B	B	C	C
β	°	24	24	24	24	24	30	24	35	30	24	15	15
ØA	mm	65	75	90	100	120	150	165	180	180	225	250	285
B	mm	52	62	74,5	84	101,5	130	140	155,5	155,5	196	218	245
ØC	mm	35	42	47	57	75	90	95	110	110	140	140	175
F	mm	1,7	2	2,5	2,5	2,5	3	3	3	3,5	5	6	7
G	mm	4,5	5,5	6	7	8	10	12	12	14	15	18	20
M	mm	32	42	48	48	60	75	96	100	100	108	130	135
ZxH	mm	4x6,1 4x8,1 8x6,1	4x6,1 6x6,1 8x6,1	4x8,1 6x8,1	4x10,1 6x8,1 8x8,1	8x8,1 8x10,1 8x12,1	8x10,1 8x12,1	8x16,1	8x14,1 8x16,1 10x16,1	10x16,1	8x16,1 8x18,1	8x18,1	8x20,1
ØK	mm	60	68	97	97	125	146	160	173	178	250	250	285
L _T	mm	35	35	40	40	60/100	110	100	110	110	110	80	100
ØS	mm	42	42	60	60	70	85	100	100	120	114	146	146
L _{z,min}	mm	280	325	370	370	430	565	640	695	790	715	855	960
L _{z1,min}	mm	510	525	600	600	600	870	910	1000	1100	1020	1110	1200
L _{z2,min}	mm	180	220	250	250	315	350	460	520	600	530	730	760
L _{f,min}	mm	188	220	220	220	280	370	370	440	450	480	620	700
L _{f1,min}	mm	128	168	192	192	240	300	320	400	400	432	520	540
L _{f2,min}	mm	64	84	96	96	120	150	160	200	200	216	260	270
ØK	mm	20	22	27	32	38	48	56	57	57	65	74	83
L	mm	47,2	55,2	79,1	82	105,8	121,8	133	144	152	172,4		
L ₁	mm											154	175
"DIN"													
ØA	mm	58		100	90	150	165	150	165				315
B	mm	47		84	74,5	130	140	130	140				285
ØC	mm	30		57	47	90	95	90	95				175
F	mm	1,5		2,5	2,5	3	3	3	3				7
ZxH	mm	4x5,1		6x8,1	4x8,1	8x12,1	8x16,1	8x12,1	8x16,1				8x22,1
ØA	mm							180					
B	mm							155,5					
ØC	mm							110					
F	mm							3					
ZxH	mm							8x12,1					
"SAE"													
ØA	mm			97	116	120	150	175	205		230		
B	mm			79,37	95,25	95,25	120,65	155,5	184,15		205		
ØC	mm			60,32	69,85	69,85	95,25	168,23	196,81		223		
F	mm			1,5	1,4	1,5	1,5	3	3		3,8		
ZxH	mm			4x10,1	4x12,1	4x11,1	4x14,1	8x10,1	12x10,1		8x12,1		
ISO 12667													
ØA	mm						150	150		180			
B	mm						130	130		150			
ZxH	mm						4x13	4x13		4x15			

* Veličine iznad 2,85 FKL isporučuje prema porudžbini/Sizes over 2,85 FKL delivers according to order

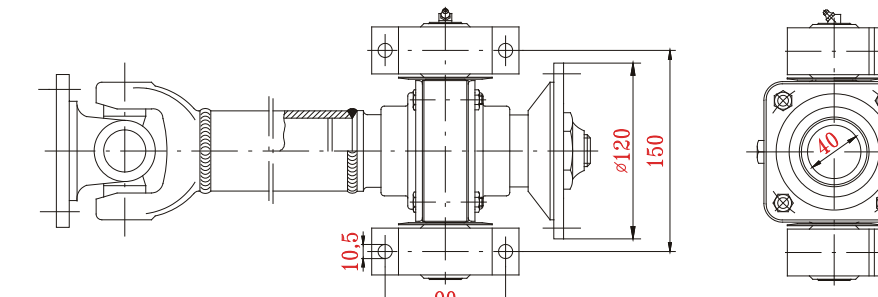
IZVEDBA:
DESIGN: **.10**



"ZASTAVA-IVECO"
"TAM"

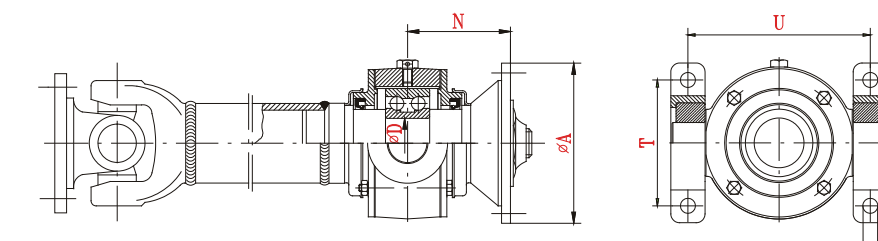
ØD	ØA	N	M	K	V	W
mm	mm	mm	mm	mm	mm	mm
35	116	78	58	168	14,2	13
40	120	85	62,7	168	14,2	13
45	150	75,8	69,1	194	14,2	13
55	150	95	71,5	194	15	30
60	180	100	80	200	15	30

IZVEDBA:
DESIGN: **.20**



"TAM 75"

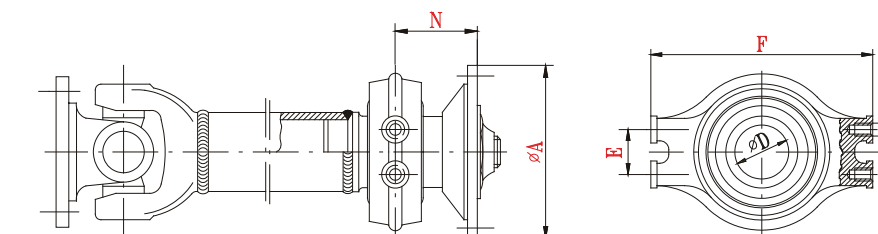
IZVEDBA:
DESIGN: **.20**



"FAP"

ØD	ØA	N	T	U	V
mm	mm	mm	mm	mm	mm
50	150	120	140	180	14,5
65	150	128	140	214	14,5

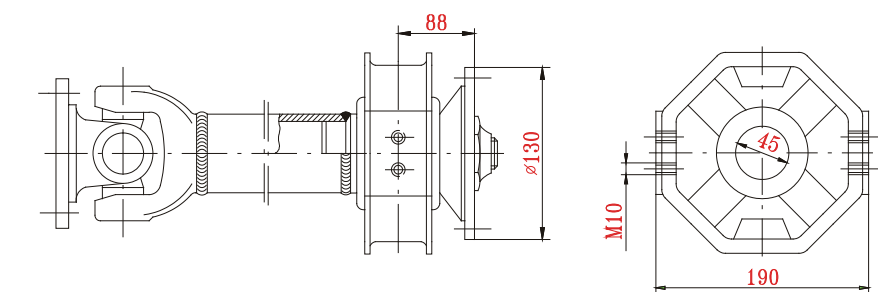
IZVEDBA:
DESIGN: **.25**



"FAP"

ØD	ØA	N	F	E	G
mm	mm	mm	mm	mm	mm
50	150	88,5	190	50	M12
60	150 165 180	94,5 110	247	50	M12

IZVEDBA:
DESIGN: **.40**



"MB"